



## 2025 11+ Testing Information

For applications to join Year 7 in September 2026

Please keep this booklet in a safe place for future reference.

If you have any queries regarding the 11+ testing process or applying for a place at Bourne Grammar School, please contact Mrs Revell *via* [admissions@bourne-grammar.lincs.sch.uk](mailto:admissions@bourne-grammar.lincs.sch.uk)

## About the 11+ Tests

Bourne Grammar School is a mixed selective school with a large Sixth Form. All students who wish to apply for a Year 7 place at Bourne Grammar School must sit the Lincolnshire Consortium of Grammar Schools' 11+ tests. These tests are designed to identify the top 25% of children by ability in the selective areas of Lincolnshire and students who achieve a qualifying score are likely to have the potential to do well within a Grammar School environment. For students currently in Year 5, 11+ testing is carried out in September 2025 for entry into Year 7 in September 2026.

There are two 11+ tests and both must be taken.

## The Verbal Reasoning Test

This is the first test that is taken and it consists of 80 questions to be answered in 50 minutes. The questions are split into 15 or more sections with 5 or 6 questions of the same type per section. Questions are multiple-choice and can be answered in any order throughout the 50-minute exam. Questions are answered on a separate answer sheet using a pencil to make a horizontal line against the chosen answer. Rough working may be done on the question booklet. The answer sheets are marked by a third-party organisation, using an optical mark reader.

*Example of a Verbal Reasoning question: In these questions, three of the five words are related in some way. Find the two words that do not go with these three and mark them both on the answer sheet*

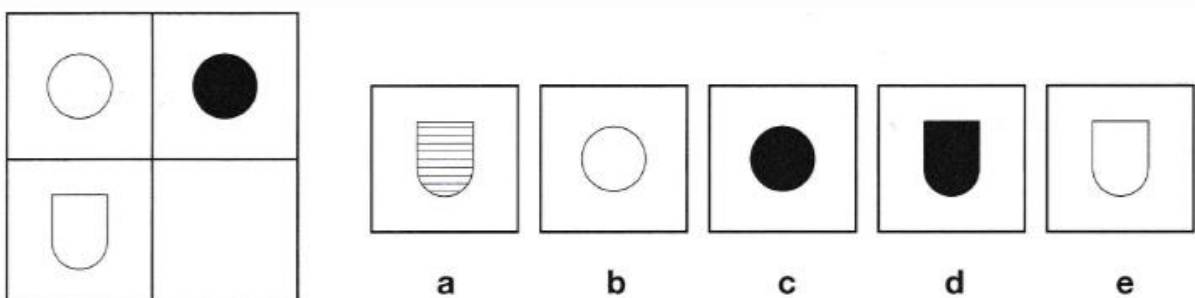
violin      orchestra      guitar      drums      music

Answer: orchestra, music

## The Non-Verbal & Spatial Reasoning Test

This is taken one week after the Verbal Reasoning test and consists of 70 questions split into 5 sections (3 Non-Verbal Reasoning sections and 2 Spatial Reasoning sections). The Non-Verbal & Spatial Reasoning test must be answered one section at a time following precise instructions from the invigilator. At the start of each section the invigilator will read out the instructions and allow the students to answer two practice questions. Once the practice questions have been completed and the answers have been given by the invigilator, students will have 7 minutes to complete the 14 questions in the first section. Students must complete each section as instructed by the invigilator and must not move onto the next section until they are told to do so. Likewise, a student must not go back to a section once the invigilator has told them to move on. Questions are answered on a separate answer sheet using a pencil to make a horizontal line against the chosen answer. Rough working may be done on the question booklet. The tests are marked as for the Verbal Reasoning test.

*Example of a Non-Verbal & Spatial Reasoning question: In the big square on the left of the example below, one of the small squares has been left empty. One of the five figures on the right should fill the empty space.*



Answer: d

## Scoring

After each test is marked, the number of correct answers achieved, along with the age of the child (in years and months at the time of taking the test), are used to calculate a 'standardised' score. The papers are equally weighted and the maximum standardised score on each paper is 141. A score of 100 would be an 'average' score for the cohort and 110 would place the child in the top 25% by academic ability.

An overall 11+ score is obtained by adding together the standardised scores achieved in the Verbal Reasoning test and the Non-Verbal & Spatial Reasoning test. A qualifying score is a combined score of 220 or above (282 is the maximum possible standardised score). Any child who achieves a qualifying score of 220 or above is deemed to have 'passed' the 11+ test and is regarded by the test to be in the top 25% by academic ability.

The standardisation process takes account of the age of the child (in years and months) at the time of taking the test. For example, a child born in September (i.e. one of the oldest in the year group) may have to achieve a raw score of 70/100 in order to achieve a qualifying score of 220. A child born in August (i.e. one of the youngest in the year group) would have to achieve a slightly lower score in order to achieve an identical qualifying score of 220.

*Please note that the raw scores stated above are for illustrative purposes only. Definitive guidance cannot be given on the raw score required on each paper in order to 'pass' the 11+ test and achieve a qualifying score. This is due to the fact that the number of correct answers required to achieve an overall standardised score of 220 is determined each year only once all the tests have been taken across all the Grammar Schools in the Lincolnshire Consortium and the results analysed. This is done by a third-party supplier and not by Bourne Grammar School.*

## Familiarisation papers

Official familiarisation papers for both tests are sent out to the primary schools\* in the summer term of Year 5 once parents have registered their child with Bourne Grammar School's admissions department. Familiarisation papers may or may not be marked by a primary school (according to the preferred practice of each primary school's Headteacher) and these official papers cannot be taken home. They are designed to enable students to see 11+ style questions, learn how to complete the answer paper and experience examination conditions.

The 11+ Verbal Reasoning test and Non-Verbal & Spatial Reasoning test used by Bourne Grammar School and the Lincolnshire Consortium of Grammar Schools are produced and marked by GL Assessment. GL Assessment has made samples available of Verbal Reasoning and Non-Verbal & Spatial Reasoning tests which parents may wish to look at with their son/daughter to aid familiarisation. These 'practice' papers are free of charge and can be accessed *via* a link on our website. Please note that we do not use 11+ English or Maths tests so please ignore those sample papers.

Additional tutoring is not recommended but parents who wish to purchase similar-styled papers to help familiarise their child with the style of questions on both tests should look for multiple-choice 'practice' papers published by GL Assessment. The ISBN references for the multiple-choice practice tests are as follows:

Verbal Reasoning Pack 1: 978-0-7087-2761-4	Non-Verbal Reasoning Pack 1: 978-0-7087-2764-5
Verbal Reasoning Pack 2: 978-0-7087-2762-1	Non-Verbal Reasoning Pack 2: 978-0-7087-2765-2
Verbal Reasoning Pack 3: 978-0-7087-2763-8	Non-Verbal Reasoning Pack 3: 978-0-7087-2766-9
All Verbal Reasoning Bundle Pack: 978-0-7087-2769-0	All Non-Verbal Reasoning Bundle: 978-0-7087-27760-6

\*Some primary schools do not carry out familiarisation tests. Children who attend those schools will be invited to attend Bourne Grammar School for their familiarisation tests. Bourne Grammar School does not mark familiarisation tests.

## Special arrangements

If your child requires any special arrangements in order to sit the 11+ tests please telephone Mrs Revell at Bourne Grammar School (01778 422288) or email [admissions@bourne-grammar.lincs.sch.uk](mailto:admissions@bourne-grammar.lincs.sch.uk) as soon as you have registered your child. Please note that 25% extra time allowance will not be granted unless suitable formal evidence is provided and extra time is listed in the evidence. If your child is in the process of being assessed and the assessment has not been completed by the scheduled 11+ testing dates, it is strongly recommended that your child does not take the 11+ tests until any ongoing assessments have been completed.

## Registration and testing day arrangements

Please register your child for the 11+ tests as soon as possible using the registration form on the School's website, [www.bourne-grammar.lincs.sch.uk](http://www.bourne-grammar.lincs.sch.uk). Early registration helps with the planning and administration of the testing process and ensures that sufficient practice papers are sent to the primary schools in good time. Once registered, all communications for the 11+ Admissions Test (notices, invitations to the testing days and results) will be sent to the email address that you include on your registration form. Please ensure that you check your emails regularly (**including your junk inbox**) for any information regarding the 11+ Admissions Test. Once registered, details of the arrangements for each of the testing days will be emailed to the email address listed on the registration form in the week commencing 1 September 2025.

**Please note that the normal deadline for 11+ registration is 30 June 2025.** Children for whom registrations are received after the deadline date will not be able to attend the main September testing dates. A late-registration catch-up session may be organised in early October, conducted at Bourne Grammar School.

If you have registered your child and they no longer wish to sit the 11+ test, please notify Mrs Revell as soon as possible *via* [admissions@bourne-grammar.lincs.sch.uk](mailto:admissions@bourne-grammar.lincs.sch.uk) so that we can remove them from the testing arrangements.

## Sickness on 11+ test days

If your child is unwell on the day of either test or is otherwise unable to attend for any reason (e.g. a family crisis or bereavement) please do not bring him/her to the test. Please email [admissions@bourne-grammar.lincs.sch.uk](mailto:admissions@bourne-grammar.lincs.sch.uk) as soon as possible so that arrangements can be made for your child to sit the test at Bourne Grammar School at a later date. It is not possible for follow-up sessions to be offered at individual primary schools, including those where Friday testing is conducted.

## Test results

Results of the 11+ test will be emailed to the email address listed on the registration form at noon on Friday 10 October 2025. Results cannot, in any circumstances, be obtained by phone or in person from the School.

We include the standardised score achieved in the results email but do not include the marks for each section. Please note that once a child has achieved a qualifying score we do not refer to the standardised score achieved throughout the child's career at Bourne Grammar School, nor do we use it for setting purposes. The 11+ test is used solely in order to select students for entry to the School.

## Bourne Grammar School's 'catchment area'

We are frequently asked '*where do I need to live to ensure that my child is offered a place if they pass the 11+?*'

There is no defined 'catchment area'. The School is now able to offer 240 places in Year 7 and has therefore considerably increased its 'catchment area'. The 'catchment area' varies from year to year according to the cohort size, proportion of siblings and other unpredictable factors, so we cannot advise a guaranteed 'catchment area'.

## How to apply for a Year 7 place

Details of how to apply for a Secondary School place will be provided by the primary school that your child attends. The deadline for submitting applications for a Year 7 place in September 2026 is 31 October 2025. Offers of places in Year 7 will be made by the relevant Local Authority on 2 March 2026.

## Oversubscription criteria

Year 7 places are offered to qualified students (those who have achieved a standardised score of 220 or above) in the following order:

- Any child with a statement of Special Educational Needs or an Education, Health and Care Plan (EHCP)
- Any child in public care or who has previously been in public care
- Any child with a brother or sister on roll at the School (Year 7 - Year 13) at the time of application
- A child with a parent who works at Bourne Grammar School
- 35 places available for students eligible for Pupil Premium who achieve the minimum qualifying standard. Priority will be given to the child who lives closest to School.
- The distance from the child's main home address to the School

Further details can be found in the 2026 Admissions Policy on the School's website.

## Appeals

Once the various Local Authorities have offered Year 7 places on 2 March 2026, all parents have the right to appeal if they have listed Bourne Grammar School as one of their School preferences and subsequently have not been offered a place at the School. It is important to note that an appeal cannot be made if Bourne Grammar School is not listed as one of the preferences.

The following scenarios have been the basis of appeals:

- Scenario A: A child did not achieve a qualifying score and was therefore not offered a place at Bourne Grammar School on grounds of non-qualification
- Scenario B: A child did achieve a qualifying score but was not offered a place on the basis of distance (i.e. their home address was further away from the School than that of the 240th place offered)

All appeals are heard by an independent appeals panel and will normally be heard in May/June 2026. In the case of Scenario A, the appeals panel must decide if the child is suitable for a grammar school education even though they have not achieved a qualifying score in the 11+ test. If the panel upholds the appeal, the child will be deemed to have achieved a qualifying score and the panel then has the power to instruct Bourne Grammar School to offer a place or to add the child to the waiting list.

In the case of Scenario B, the appeals panel must decide why a place at Bourne Grammar School is more suitable for the child than a place at another school closer to their home address. If the panel upholds the appeal, the panel may instruct Bourne Grammar School to offer a place or to add the child to the waiting list.

All appeals must be submitted through Bourne Grammar School and cannot be made until Year 7 places are offered on 2 March 2026. Further details are available from Lincolnshire County Council School Admissions Team on 01522 782030 or [via www.lincolnshire.gov.uk/school-admissions/appeal-school-place](http://www.lincolnshire.gov.uk/school-admissions/appeal-school-place)

Further guidance on the appeals process can be obtained [via admissions@bourne-grammar.lincs.sch.uk](mailto:admissions@bourne-grammar.lincs.sch.uk)

## Important Dates

11+ Registration deadline (registrations received after this date will not be able to attend the September testing dates)	Monday 30 June 2025
Familiarisation Test at Bourne Grammar School	Saturday 6 September 2025 (further details to be confirmed week commencing 7 July 2025)
Formal Invitation to 11+ Testing (via email)	Week commencing 1 September 2025
11+ Verbal Reasoning test at Bourne Primary Schools, Malcolm Sargent and St Gilbert's (Stamford)	Friday 12 September 2025
11+ Verbal Reasoning test at Bourne Grammar School	Saturday 13 September 2025
11+ Non-Verbal & Spatial Reasoning test at Bourne Primary Schools, Malcolm Sargent and St Gilbert's (Stamford)	Friday 19 September 2025
11+ Non-Verbal & Spatial Reasoning test at Bourne Grammar School	Saturday 20 September 2025
Results emailed to parents	Friday 10 October 2025 at 12:00 noon
Closing date for applications for a Year 7 place in September 2025 (details of how to apply will be given by Primary Schools)	Friday 31 October 2025
Offer of Year 7 places	Monday 2 March 2026
Appeals may be submitted from this date (Appeals must be submitted to Lincolnshire County Council and not Bourne Grammar School)	Monday 2 March 2026
Revised offer of places to take account of refusals and late entries	Week commencing 30 March 2026

## Useful websites

[www.bourne-grammar.lincs.sch.uk](http://www.bourne-grammar.lincs.sch.uk)

Click on 'School Information', then '11+ Registration' to register your child for the 11+ tests

[www.grammarschools.lincs.sch.uk](http://www.grammarschools.lincs.sch.uk)

For more information on the Lincolnshire Consortium of Grammar Schools

[www.gl-assessment.co.uk/free-familiarisation](http://www.gl-assessment.co.uk/free-familiarisation)

For access to sample Verbal Reasoning and Non-Verbal Reasoning questions and answers

[www.lincolnshire.gov.uk/school-admissions](http://www.lincolnshire.gov.uk/school-admissions)

For information on applying for a Year 7 place and the appeals process